

Midges

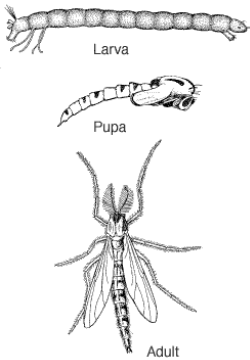
What are they?

The residents of San Mateo County are being inundated by midges. **Midges are small mosquito-like insects that do not bite.** Their immature stages develop in the mud at the bottom of brackish water lagoons such as **Mariner's Point Lagoon and the lagoons and sloughs of Foster City and Redwood Shores.**



Adult midges are attracted to lights, and at night, they will readily enter homes through open doors and windows. During the day, they seek shelter from the wind and can be observed resting on walls and screens in porches and entryways. When in flight they may form "clouds" or "swarms".

Where do they come from?



Midges prefer fresh water and when the water in the lagoons and sloughs is less salty, large numbers of midges will develop there. The unusual amount of rain this year, combined with warmer weather has encouraged the development of midges. In addition, the tide gate to **Mariner's Lagoon** has been under repair for several weeks causing the water in there to become very fresh. Until these sources are flushed out by tidal water, residents can anticipate that they will be troubled by midges. Individual midges live only a few days, but new generations will continue to come off as long as the current conditions exist. **The problem will be alleviated when the tide gate is repaired and open again.**

Are they Dangerous?

Although this non-biting insect may cause annoyance, they do not transmit disease. Furthermore, they are an important food source for shorebirds and an important part of the local ecosystem.

The methods and materials used by the San Mateo County Mosquito Abatement District are designed to control mosquitoes while having a minimum impact on any other organism. The District's mosquito control program does not usually have an effect on

(Continued on page 2)

Midges

(Continued

from page 1)

midge populations because:

- Mosquito larvae live at the top of shallow water and cannot survive in large open water sources.
- They do not develop in lagoons or sloughs and these areas are not treated by the District.
- The materials applied by the district do not kill midges at the doses used to treat mosquitoes, they are designed to have minimal impact on the environment.
- Midges develop in the mud at the bottom of water sources, mosquito control materials do not reach this area.

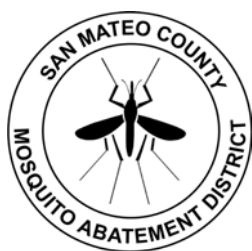
What is being done to alleviate the problem?

- * The Public Works Department of the City of San Mateo is working to repair the tide gate
- * When the tide gate is opened again midge development will stop. Adult midges will die within a week
- * The San Mateo County Mosquito Abatement District is conducting trapping in the area, if high densities of mosquitoes appear in these traps they will be brought under control.



What can you do?

- * Adult midges seek places cool humid locations where they are sheltered from the wind. Your porch or entryway is an ideal resting place.
- * Fans may discourage them from resting in these places
- * Keep doors and screens shut, especially at night when indoor lights will attract midges into your home.
- * Do not use aerosol cans of bug spray—the material dissipates quickly and the midges will return a few minutes later.
- * Turn off outdoor lights, adult midges are attracted to light



San Mateo County Mosquito Abatement District

"An Independent Special District Working for You Since 1916"

1351 Rollins Road
Burlingame, CA 94010

Phone: 650-344-8592
www.smcmad.org