

Insects That Resemble Mosquitoes

There are several insects which can be easily confused with mosquitoes.

They may appear to be trying to bite. However common look-alikes cannot bite and do not transmit diseases.

Mosquito-like insects can be a nuisance during certain times of the year (usually Spring and Fall), but they do not constitute any overt health hazards.

The District uses products that are specific to mosquitoes and do not harm other animals. We do not control for midges or crane flies because they are not a public health hazard.

The District Program

San Mateo County Mosquito Abatement District is an independent, special district funded by a property tax voted in by individual cities.

We provide the following services for District residents:

**Mosquito Control
Yellowjacket Control
Insect and Tick Identification
Vector-borne Disease Surveillance
Community Education**

**IF YOU HAVE
MOSQUITOES
AND ARE UNABLE
TO LOCATE
OR ELIMINATE THE
SOURCES, TELEPHONE
YOUR DISTRICT OFFICE
FOR ASSISTANCE**

(650) 344-8592

www.smcmad.org

Mosquito-Like Insects



Crane Flies



Midges

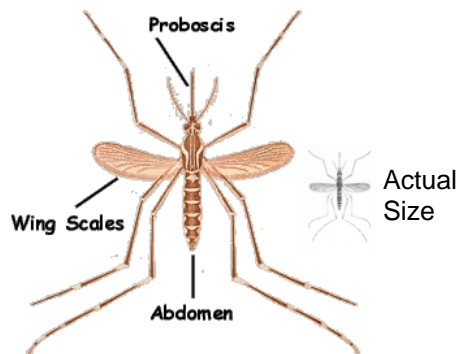
*San Mateo County
Mosquito Abatement
District*

*"An Independent Special
District Working for
You!!!"*

1351 Rollins Road
Burlingame, CA 94010
Tel: 650.344.8592
Fax: 650.344.3843

Mosquitoes and Mosquito-like insects

Typical Mosquito

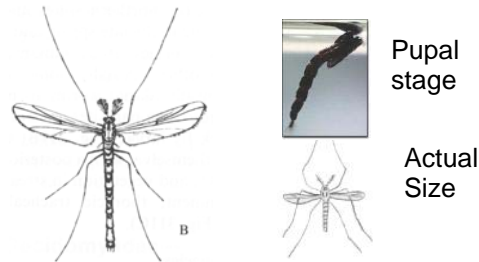


The key difference between mosquitoes and non biting mosquito look-alikes is the mouthparts.

Mosquitoes:

1. Bite using proboscis
2. Wings are same length as body
3. Breed in standing water
4. May carry diseases such as West Nile Virus

Midges



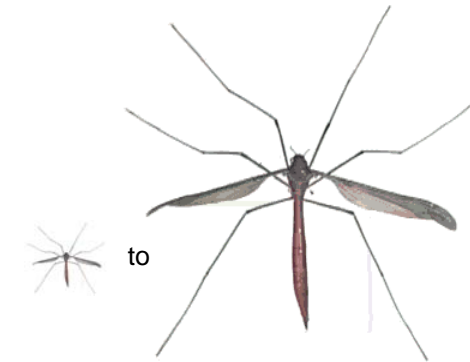
Midges resemble mosquitoes but do not bite. Although this insect may cause an annoyance when they occur in large numbers, they are not a public health problem and do not transmit diseases. Larvae develop in the mud at the bottom of ponds, lakes, and lagoons. Adult midges live about one week and usually appear during the months of April through September. Unusually large amounts of rain and increased air temperatures can accelerate the growth of midges.

Adult midges are attracted to light and will readily enter homes through open doors and windows at night time. During the day, adults may be observed resting on walls, fences and porches. When in flight they may be observed in "swarms" or "clouds".

Midges:

1. **Cannot bite** (no proboscis) or carry disease
2. Wings are shorter than body
3. Larvae develop in mud
4. Pupae can be seen at the surface of water

Crane Flies



Crane flies resemble large mosquitoes but do not bite. These insects are sometimes called mosquito hawks or mosquito eaters. In reality, the adults of this group feed on nectar or do not feed at all.

Crane flies lay their eggs in water or damp soil. The larvae feed on decaying plants, dead leaves, fungi, or roots of plants. Large numbers of adult crane flies emerge together. Males form swarms around treetops seeking females to mate with.

Crane flies:

1. **Cannot bite** or carry diseases
2. Wings are longer than the body
3. Develop in soil or water
4. Usually larger than mosquitoes