

How You Can Protect Yourself!

- Use a mosquito repellent containing DEET.
- Install or repair screens on windows and doors.
- Wear loose, long-sleeved clothing when mosquitoes are out.
- Drain standing water around your home.
- Repair broken pipes and check for leaks
- Vaccinate your horses.
- Use mosquito fish in your back yard ponds.



The District Program

The San Mateo County Mosquito Abatement District is an independent, special district funded by a property tax voted in by individual cities.

We provide the following services for District residents:

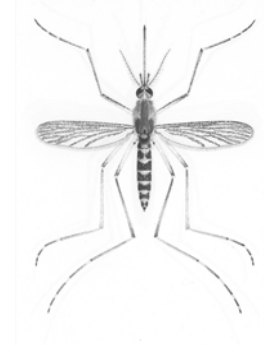
Mosquito Control
Mosquito Fish Delivery
Yellowjacket Control
Insect and Tick Identification
Vector-borne Disease Surveillance
Community Education

**San Mateo County
Mosquito Abatement District**

1351 Rollins Road
Burlingame Ca
94010

Phone: 650-344-8592
www.smcmad.org

**San Mateo County
Mosquito Abatement District**



**California
Salt Marsh
Mosquito**

Ochlerotatus squamiger

General Information

Ochlerotatus squamiger is commonly called the Winter Salt Marsh Mosquito because it breeds in salt and brackish marshes. It is medium to large in size with a grayish or black coloration. The end segments (tarsi) of the legs have broad white bands. The mixture of dark and light scales on the wings gives them a “salt and pepper” appearance. It occurs along the Pacific Coast from Sonoma County to Baja California. It has been the major mosquito problem in the San Francisco Bay within the recorded history of the area.



Life Cycle

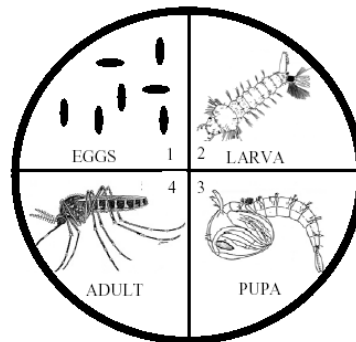
Mosquitoes have four distinct life stages: egg, larval, pupal and adult as illustrated in the picture below.

The female Salt Marsh Mosquito deposits her eggs singly on mud along the edge of receding tide pools in spring and early summer. The eggs hatched when the winter rains and high tides flood the marsh.

Larvae mature during winter and the adults emerge from mid February to April.

Adult Behavior

After mating, females will migrate up to 15 miles inland in search of a blood meal. They are vicious biters attacking people and animals at any time of day, but maximum biting activity occurs at twilight. A female must obtain a blood meal before laying eggs. She can lay up to 6 batches of eggs and will complete the journey between the salt marsh and feeding site several times. Adults may live up to three months.



Medical Importance

This species is not a very efficient vector of West Nile virus. However, they are considered a public health nuisance due to their voracious bites.

Control Methods

Control of salt marsh mosquitoes primarily focuses on the larval stage. Mosquito specific hormones and bacteria are applied directly into the water source to prevent the larvae from emerging as biting adults. These pesticides are specific to mosquitoes and are not harmful to other organisms.

**San Mateo County
Mosquito Abatement District**

1351 Rollins Road
Burlingame Ca
94010

Phone: 650-344-8592
www.smcmad.org